



Georgia Southern  
Society of Black Engineers  
A Collegiate Chapter of the National Society of Black Engineers

# PARTNERSHIP PROPOSAL

2025-2026

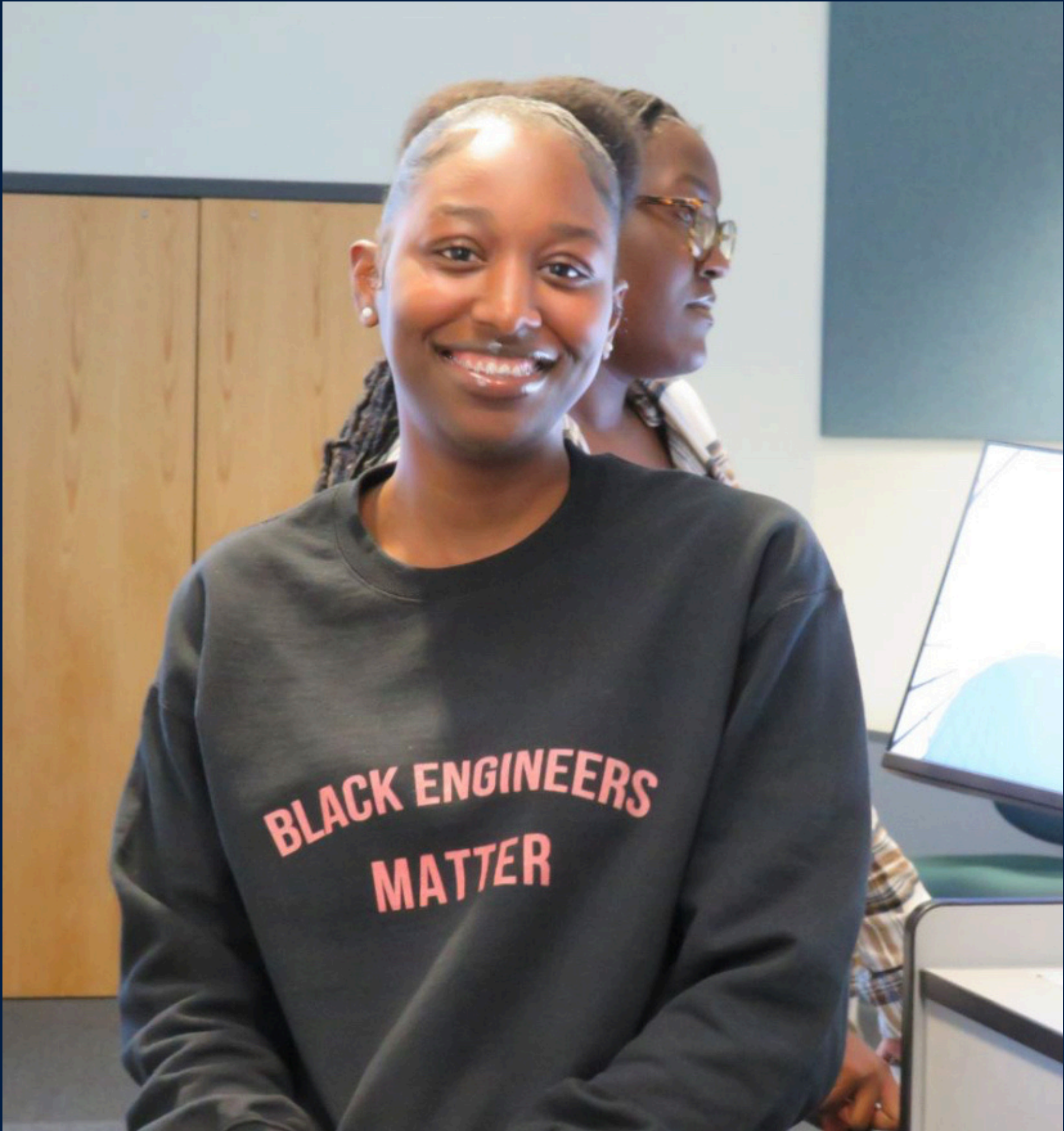






# TABLE OF CONTENTS

Letters from Leadership	4
Executive Board	6
Fact Sheet	7
Sponsorship Packages	8
Conventions	9
Our Events	10
Payment Information	13





# MESSAGE FROM THE PRESIDENT



Greetings!

My name is Jaylen Monroe, and I am honored to serve as the 2025–2026 President of NSBE GSU. I am a fourth-year Software Engineering student with a passion for growth, impact, and leadership.

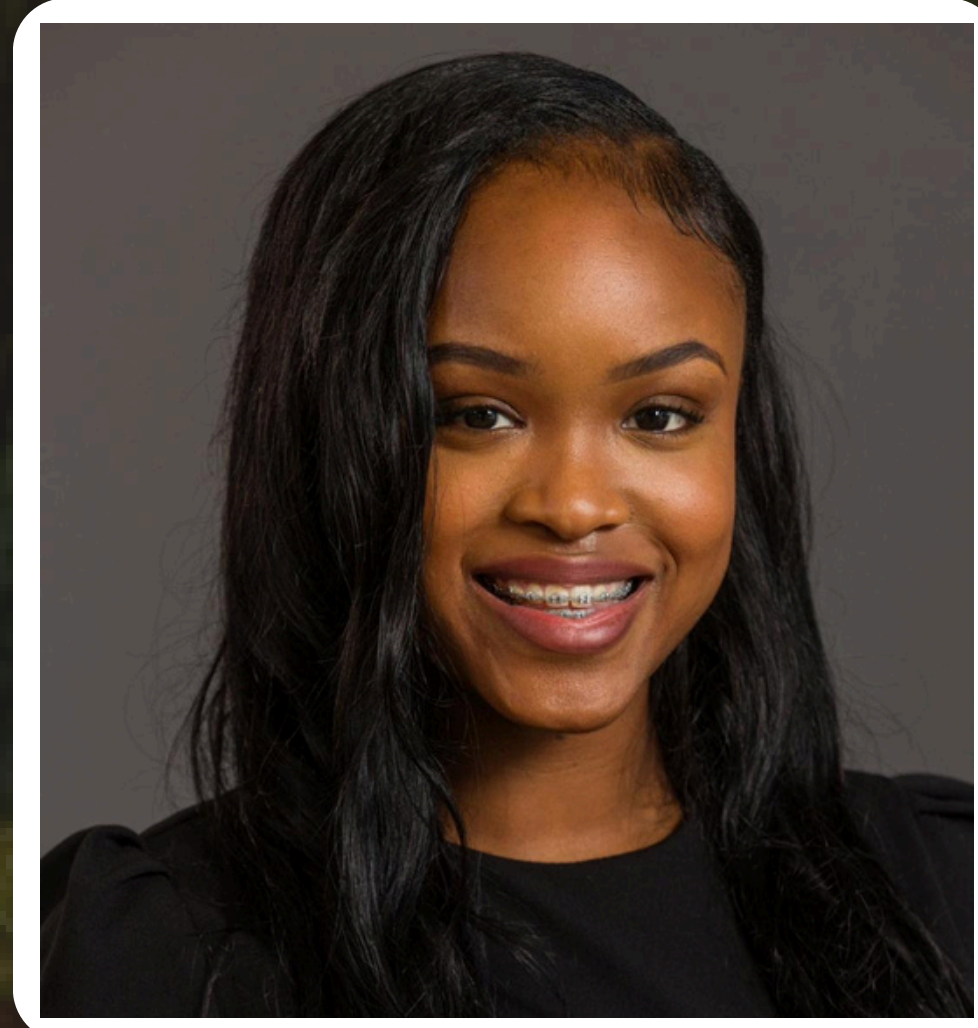
When I joined NSBE in 2023, I immediately felt welcomed and inspired. That experience led me to serve as both Public Relations Chair and Professional Delegate, where I learned to lead, connect with companies, and support our mission through outreach and media. This organization has given me more than professional development. It's given me a family. Through NSBE, I found purpose, built confidence, and gained lifelong connections that continue to shape my future.

Now, as President, my goal is to elevate our chapter and continue building on the foundation laid before me. This year's theme, **S.C.A.L.E.**, challenges us to **Strengthen Community, Create Opportunities, Aspire Boldly, Lead with Vision, and Elevate Everyone.**

Your support makes our mission possible. Thank you for believing in NSBE GSU. I look forward to growing our partnership and making a lasting impact together.



# MESSAGE FROM THE TREASURER/ FUNDRAISING CHAIR



Greetings,

Our names are Alonzo Reisinger and Cai Pratt, and we are honored to serve as the Treasurer and Fundraising Chair for NSBE GSU. We invite you to partner with us in supporting the development of the next generation of STEM leaders.

Your partnership plays a vital role in helping us fund impactful programs, workshops, conferences, and outreach initiatives that empower our members to excel academically, professionally, and personally.

This year, we've set a **fundraising goal of \$25,000** to support these efforts and expand our impact. NSBE GSU offers four partnership levels, each designed to provide meaningful value to both you and our chapter while advancing our shared commitment to diversity, inclusion, and excellence in STEM.

Together, we can build a lasting relationship that creates opportunities, fosters innovation, and strengthens our community. We look forward to working with you and are happy to provide more details or answer any questions you may have.



# EXECUTIVE BOARD



**Jaylen Monroe**  
President



**Korbyn Fedd**  
Vice President



**Ariyanna Babers**  
Secretary



**Alonzo Reisinger**  
Treasurer



**Courtney Johnson**  
Senator



**Success Emmanuel**  
Professional Delegate



**Cai Pratt**  
Fundraising Chair



**Kayla Saintus**  
Public Relations Chair



**Deniesha Griggs**  
Programs Chair



**Olympia Miller**  
Conference Planning Chair



# FACT SHEET

**75+**  
Paid Members

---

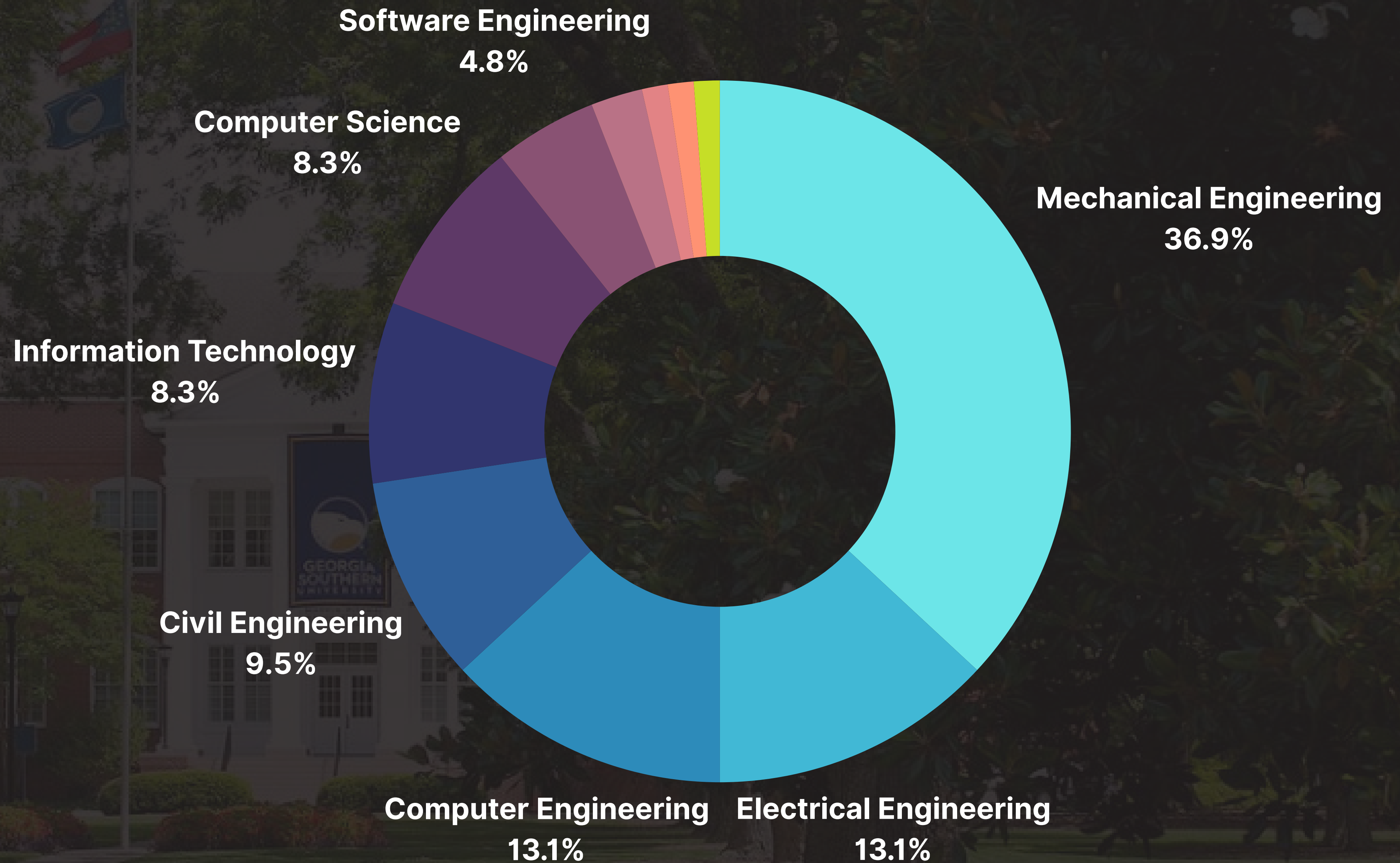
**3.3**  
Avg. GPA

---

**35+**  
Internships  
Awarded

---

**1992**  
Chartered





# SPONSORSHIP PACKAGES

## Innovator Partner

- Includes all Engineer Partner benefits
- Help sponsor NSBE Week at Georgia Southern University
- Host an exclusive networking session with NSBE members

**\$3,000+**

## Engineer Partner

- Includes all Builder Partner benefits
- Professional Development Workshop Sponsor
- Help sponsor Black Unity Fest or another one of our upcoming events

**\$2,000+**

## Builder Partner

- Includes all Foundation Partner benefits
- Recognition in NSBE GSU social media posts
- Help sponsor Buckets for Cans, our community service basketball fundraiser

**\$1,000+**

## Foundation Partner

- Access to NSBE GSU Resume Book
- Logo on NSBE GSU items (Website, Member Shirts, etc.)
- Social media thank-you/shoutout post once per semester (LinkedIn & Instagram)

**\$500+**

**If you or your organization would like to make a donation outside of the listed tiers or explore customized sponsorship opportunities, we would be delighted to collaborate with you to create a package tailored to your goals.**

**Please contact us at:**  
**[nsbe@georgiasouthern.edu](mailto:nsbe@georgiasouthern.edu)**



# CONVENTIONS

## FALL REGIONAL CONFERENCE (FRC)

NOV 2025

The Fall Regional Conference (FRC) is a platform for collaboration and networking among collegiate, pre-collegiate, alumni, and corporate representatives at the regional level. The conference promotes academic excellence and professional development through technical workshops, cultural activities, and competitions.



## 52ND ANNUAL NATIONAL CONVENTION

MARCH 2026

This event is NSBE's largest gathering of corporate affiliates, technical professionals, and pre-collegiate members. The National Convention hosts up to 10,000 attendees, 40+ admission groups, and 300+ company exhibitions annually. Its purpose is to promote academic excellence and professional development through a variety of events and workshops.





# OUR EVENTS

## BetterWorldBooks Drive

The Better World Books Drive is a signature NSBE GSU initiative that promotes literacy and education locally and globally. By collecting gently used books from students, faculty, and staff, the drive supports underserved communities and educational programs. This effort helps bridge learning disparities, fosters knowledge equity, and inspires a lifelong passion for reading.



## Buckets for Cans

Buckets for Cans unites student organizations through friendly competition with a purpose: fighting food insecurity in the Statesboro community. Teams, fans, and attendees contribute canned goods that are distributed to local families in need. More than just a game, this event builds school and organizational spirit, promotes service, and drives meaningful, lasting impact.





# OUR EVENTS

## NSBE GSU Professional Development

In collaboration with the Office of Career and Professional Development, NSBE GSU equips members with the tools to excel during Career Showcase Week. This initiative empowers students to present themselves confidently, build a strong professional brand, and take full advantage of career opportunities. By fostering preparedness and professionalism, it supports long-term success in members' academic and career journeys.



## Black Unity Fest

The Black History Month Celebration honors the richness of Black culture while fostering unity and dialogue across campus. This event creates a space for reflection, empowerment, and community engagement, highlighting the contributions of Black individuals and promoting collaboration among student organizations. It strengthens cultural awareness and encourages lasting connections through shared celebration and purpose.





# OUR EVENTS

## Networking Social Night

A dynamic event fostering meaningful connections between industry professionals and diverse students across multiple disciplines. This evening encourages open dialogue, mentorship, and relationship-building, offering companies, sponsors, and recruiters exclusive access to emerging talent from various fields. The relaxed environment provides a unique alternative to traditional career fairs, making networking more personal and impactful.



## NSBE GSU Hackathon

Designed to spotlight innovation and technical talent, this initiative challenges students to solve real-world problems through technology. By encouraging collaboration, creativity, and engineering excellence, the event strengthens our pipeline of future tech leaders and provides a unique platform for sponsors to connect directly with emerging talent in a high-impact setting.

**COMING  
SOON**



# PAYMENT INFORMATION



## PayPal

Complete payment by sending it to our  
PayPal address:

**[nsbe@georgiasouthern.edu](mailto:nsbe@georgiasouthern.edu)**



## Check (Preferred)

Please make checks payable to the National  
Society of Black Engineers.

**PO Box 8069 Statesboro, GA 30460-8069**





**Georgia Southern  
Society of Black Engineers**  
A Collegiate Chapter of the National Society of Black Engineers

# HELP US MAKE A DIFFERENCE

FOR QUESTIONS AND FEEDBACK,  
PLEASE CONTACT CAI PRATT



912-606-9077



NSBE@GEORGIASOUTHERN.EDU